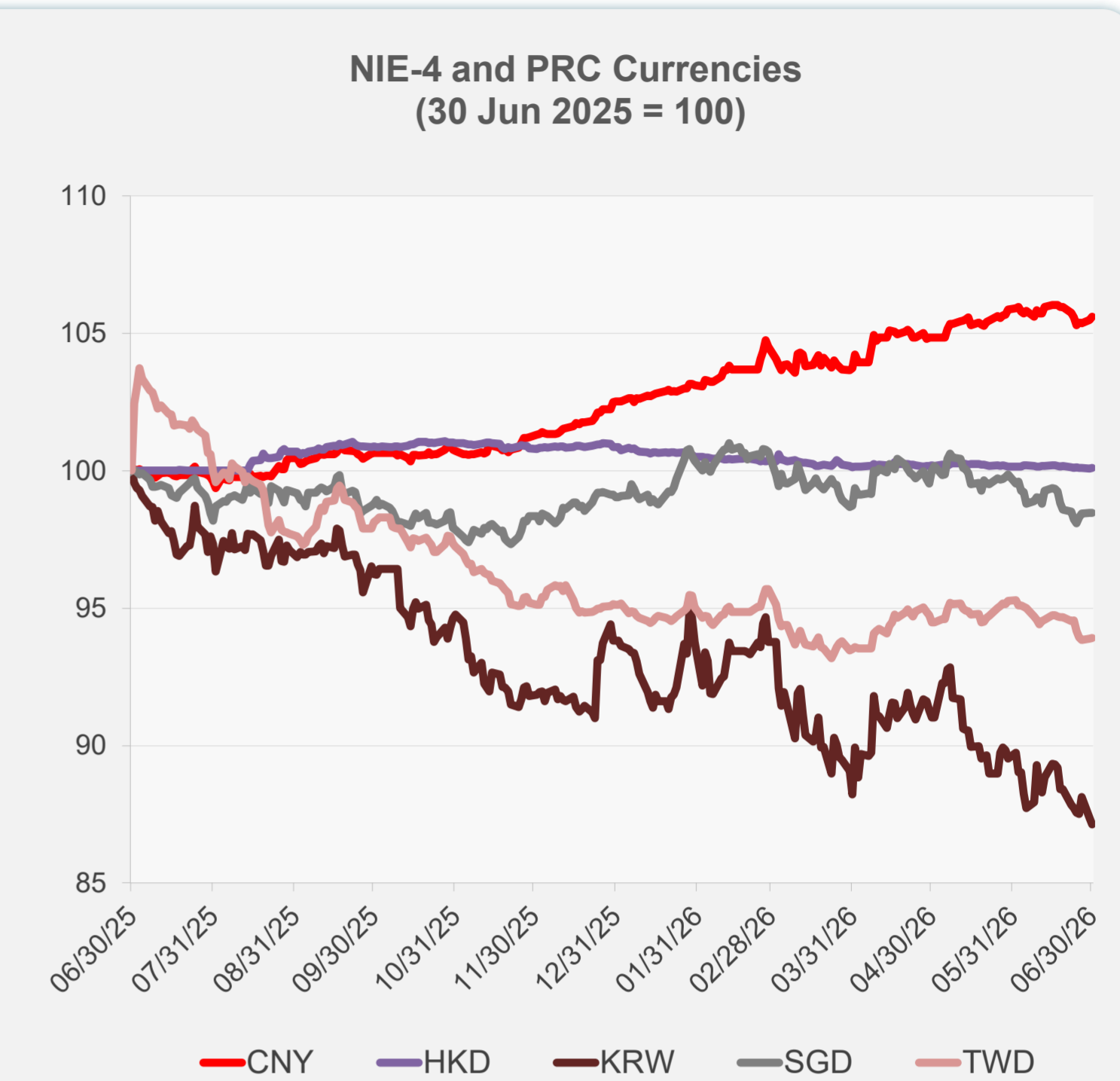
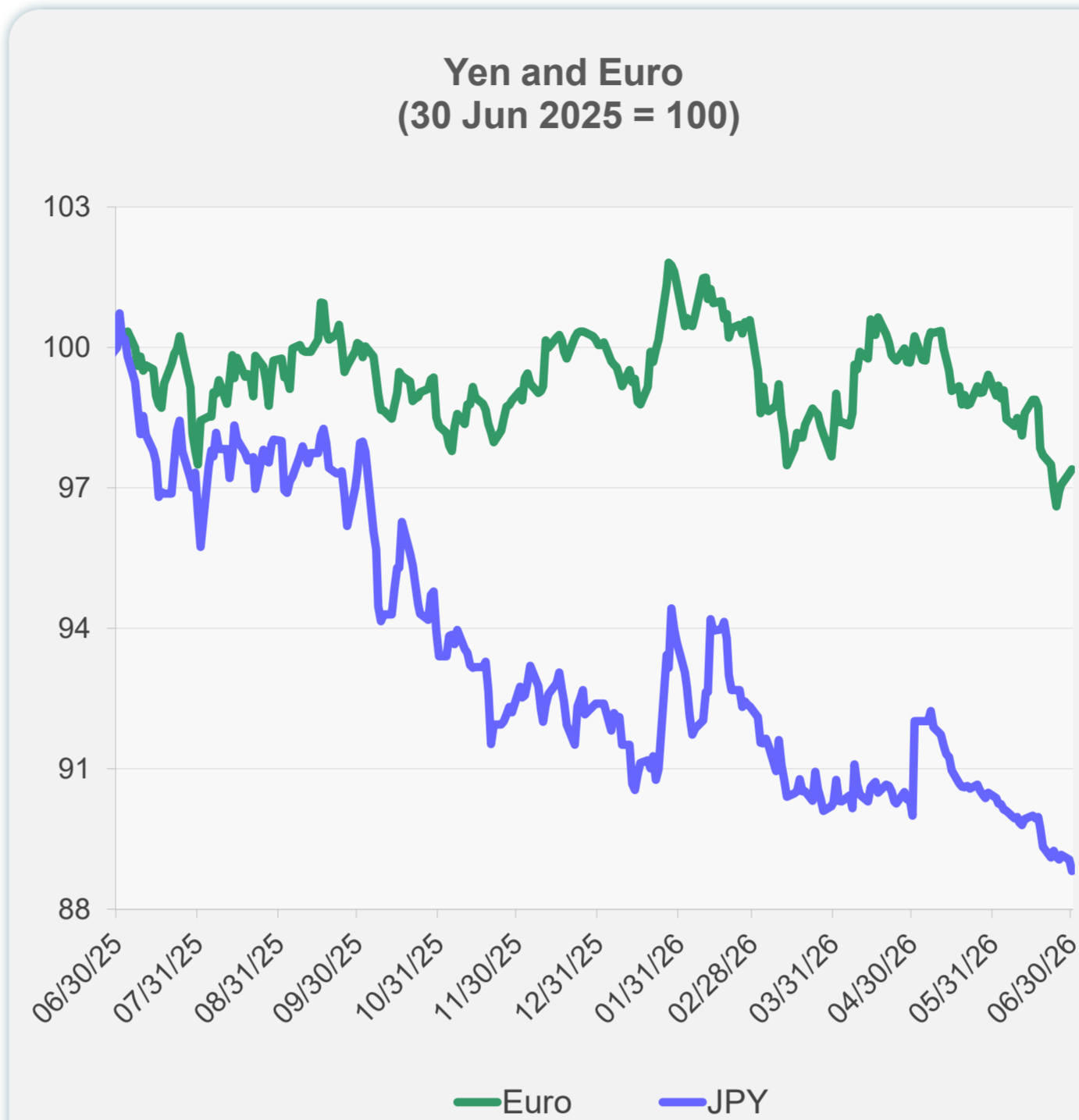
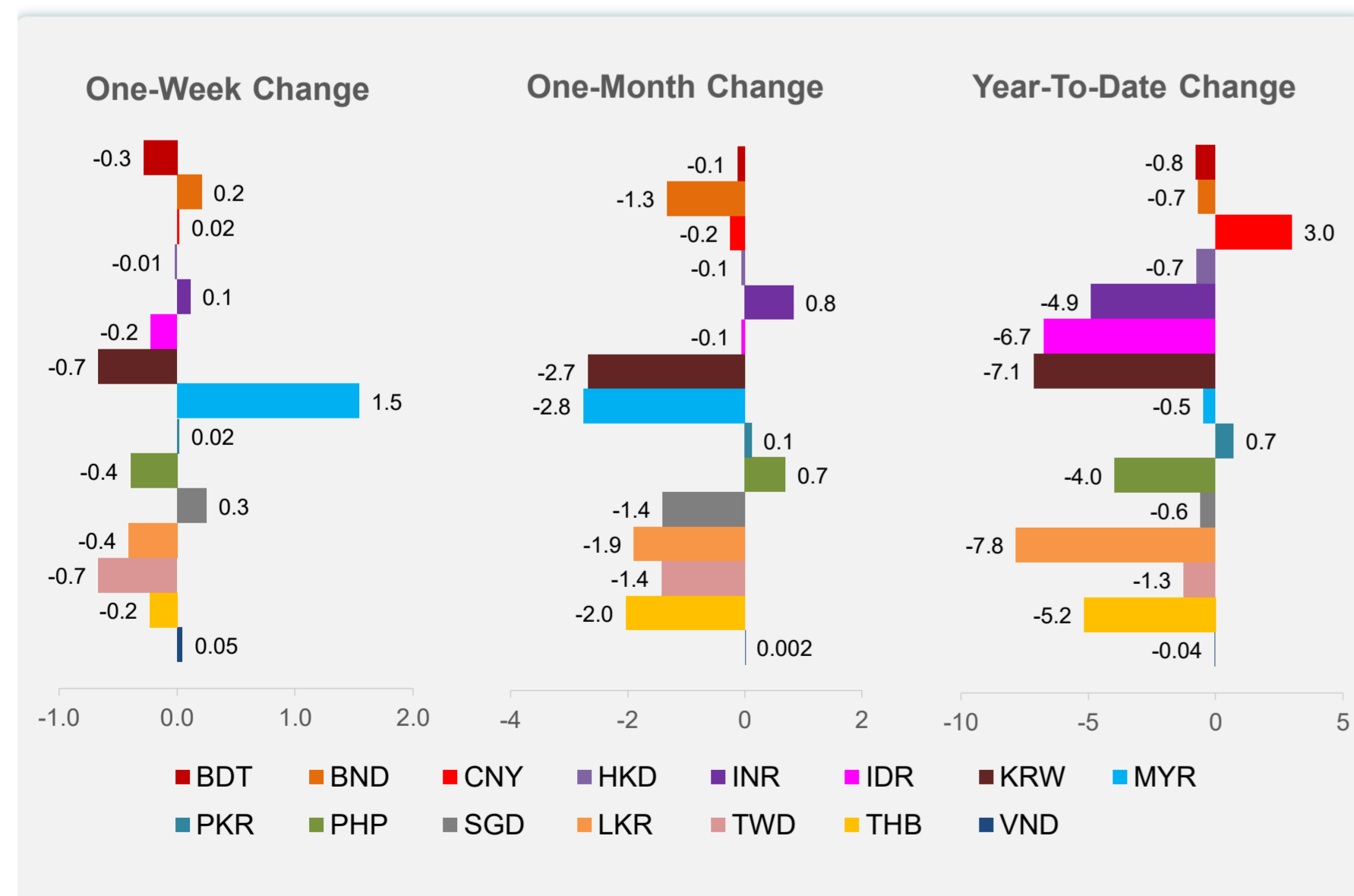
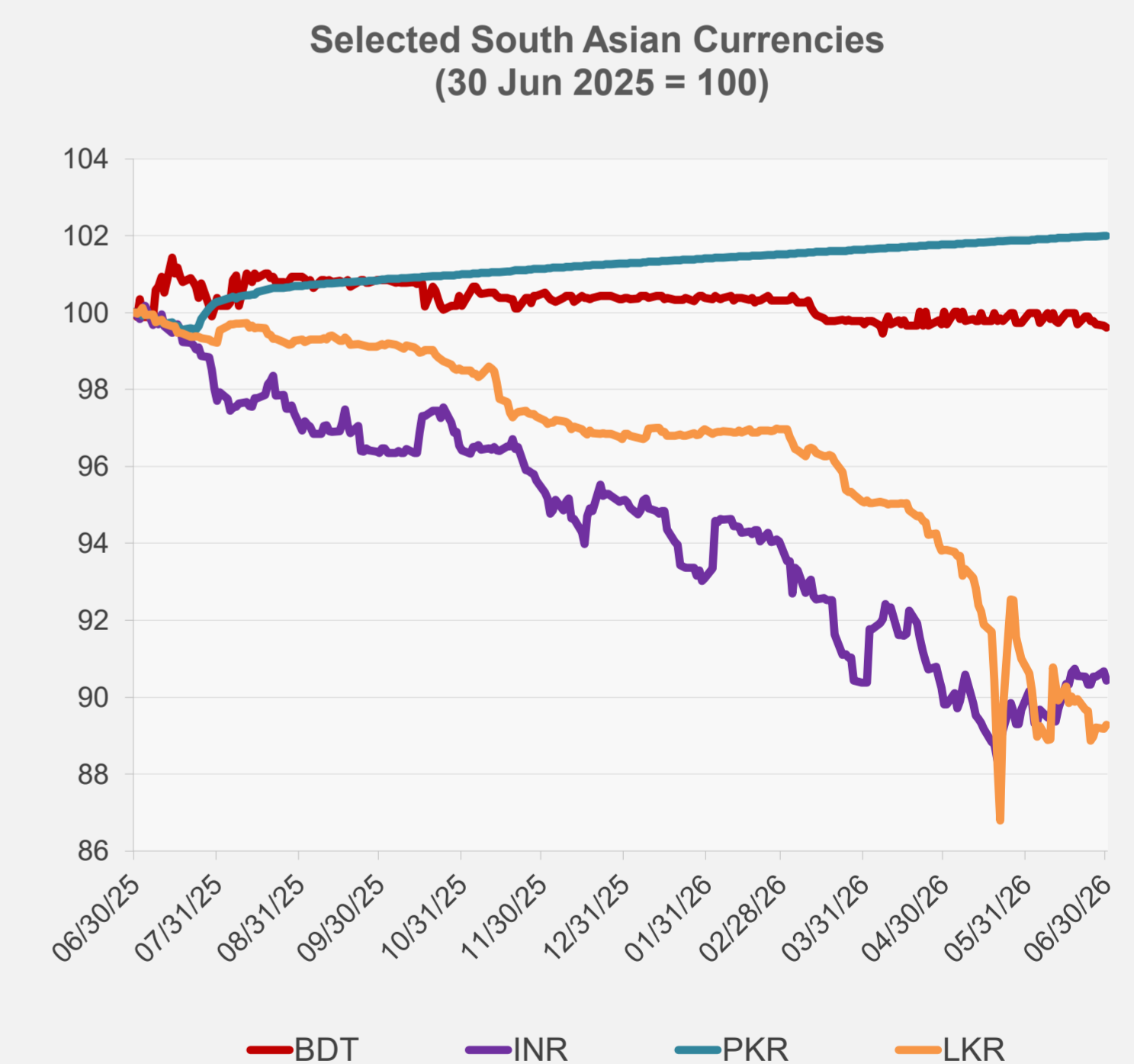
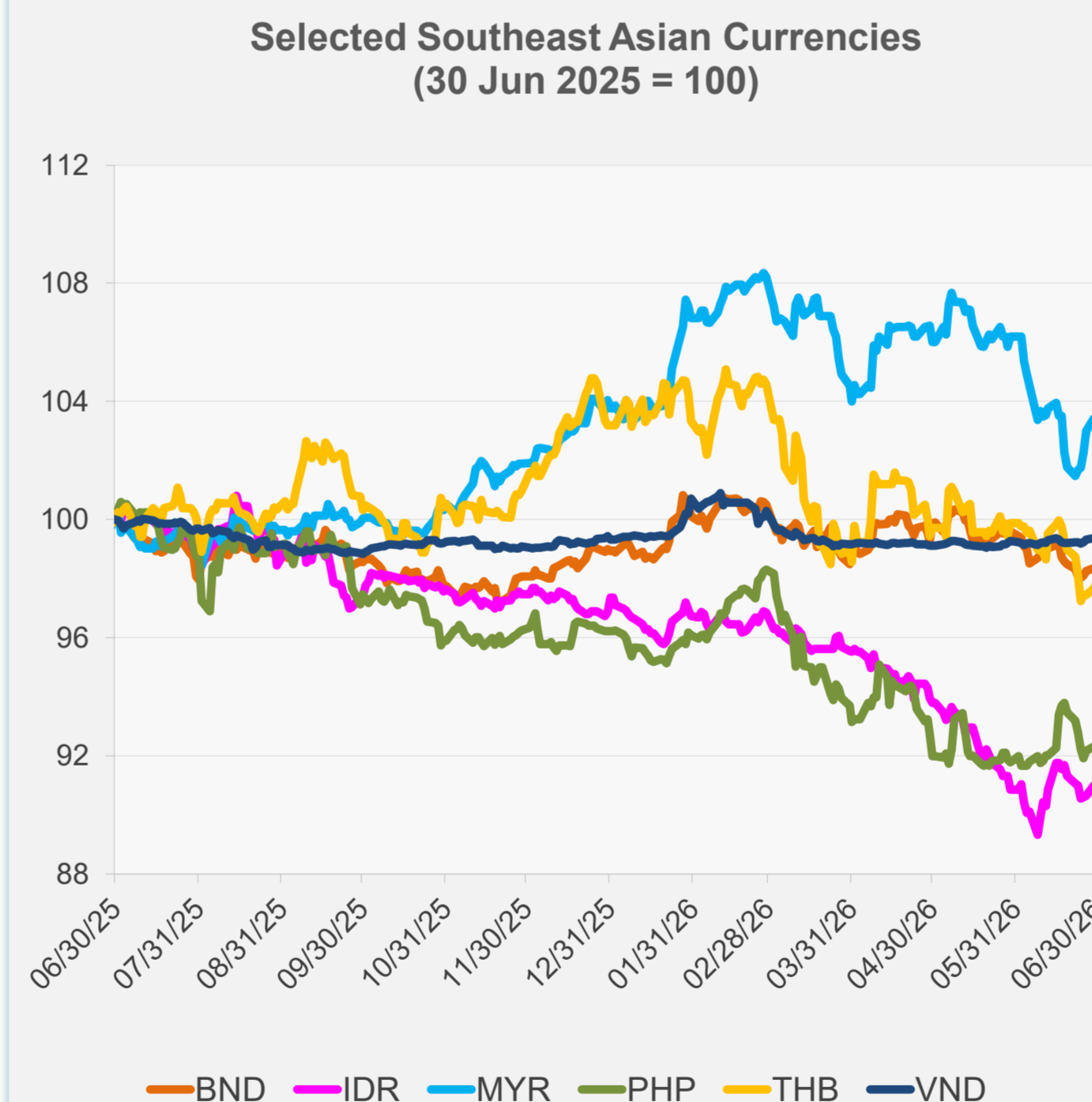


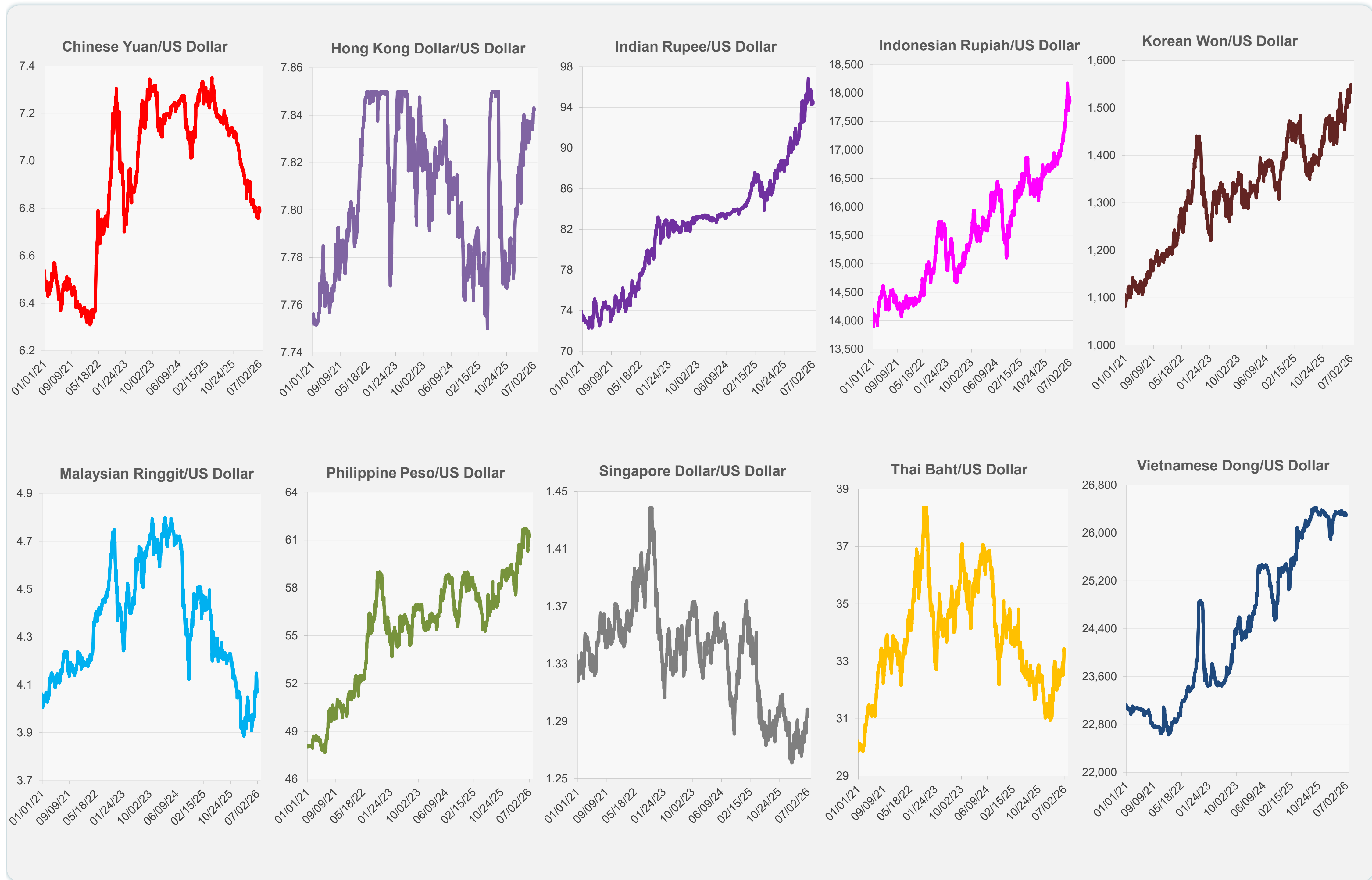
	Latest Closing	% change from Previous Day	% change from 01-Jan-26
Euro	0.87	0.09	-2.65
Japanese yen (JPY)	162.26	-0.27	-3.87
Bangladeshi taka (BDT)	123.20	-0.04	-0.77
Brunei dollar (BND)	1.29	-0.08	-0.68
Chinese yuan (CNY)	6.79	0.11	2.99
Hong Kong dollar (HKD)	7.84	0.01	-0.75
Indian rupee (INR)	94.60	-0.26	-4.88
Indonesian rupiah (IDR)	17,880.00	-0.22	-6.74
Korean won (KRW)	1,549.40	-0.27	-7.13
Malaysian ringgit (MYR)	4.08	-0.16	-0.48
Pakistan rupee (PKR)	278.15	0.00	0.70
Philippine peso (PHP)	61.23	0.10	-3.96
Singapore dollar (SGD)	1.29	-0.01	-0.58
Sri Lanka rupee (LKR)	335.88	0.11	-7.82
Taipei,China NT dollar (TWD)	31.84	0.03	-1.25
Thai baht (THB)	33.22	0.20	-5.16
Vietnamese dong (VND)	26,311.50	-0.10	-0.04



NIE = Newly Industrialized Economies



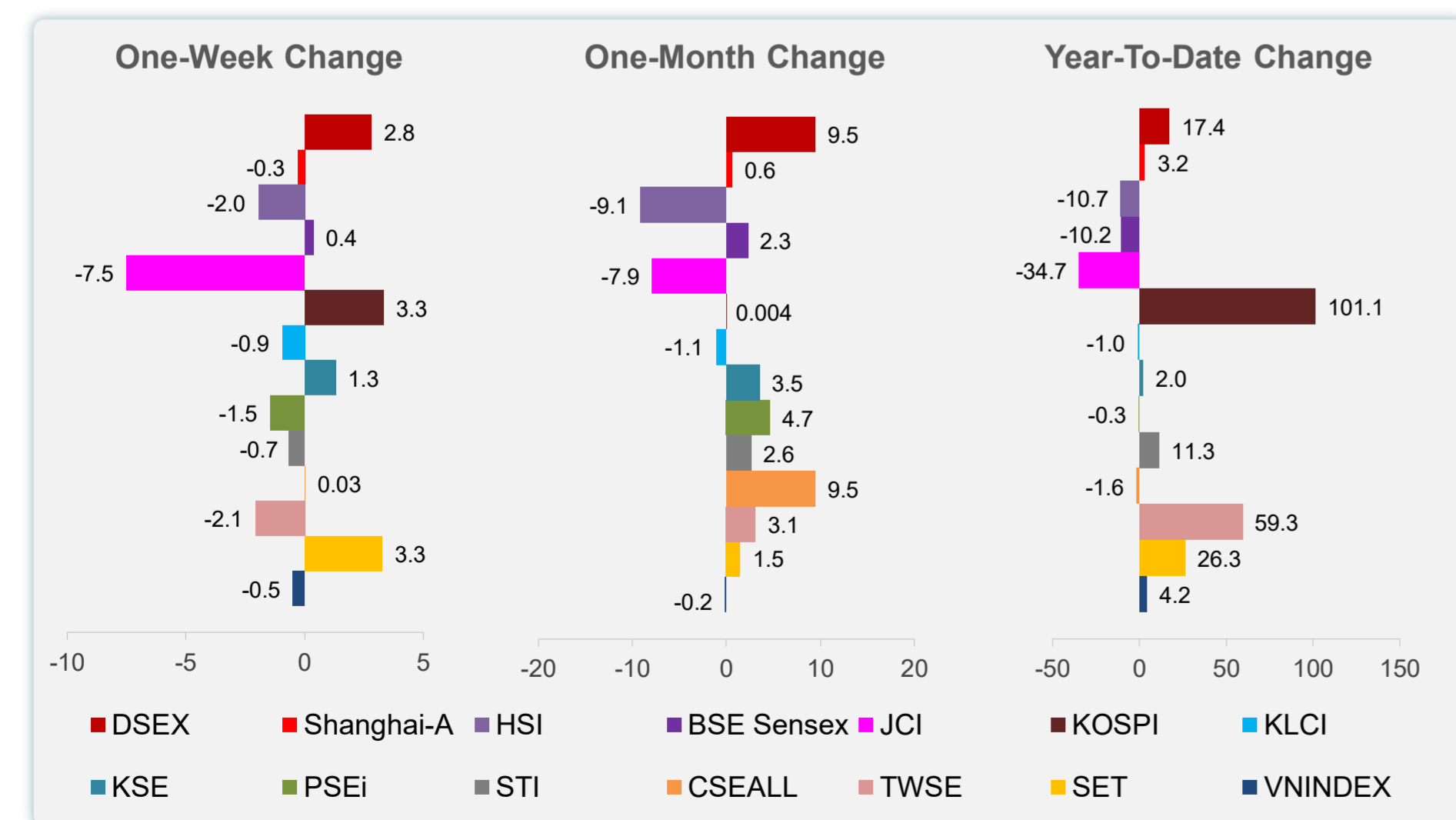
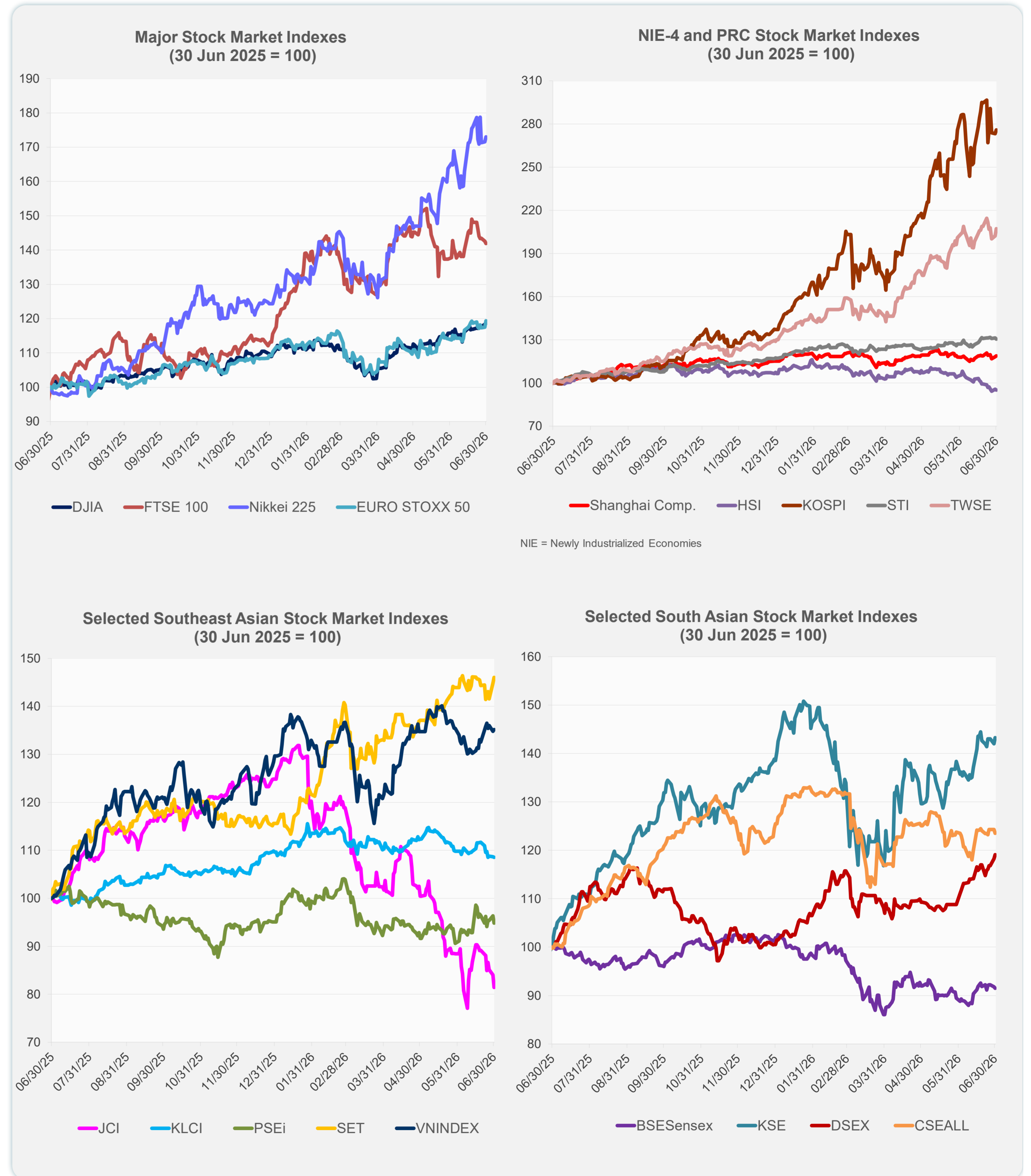
Note: Negative/Decreasing values indicate depreciation of local currency, and positive/increasing values indicate appreciation.
Source: ADB calculations using data from Bloomberg and Haver Analytics.



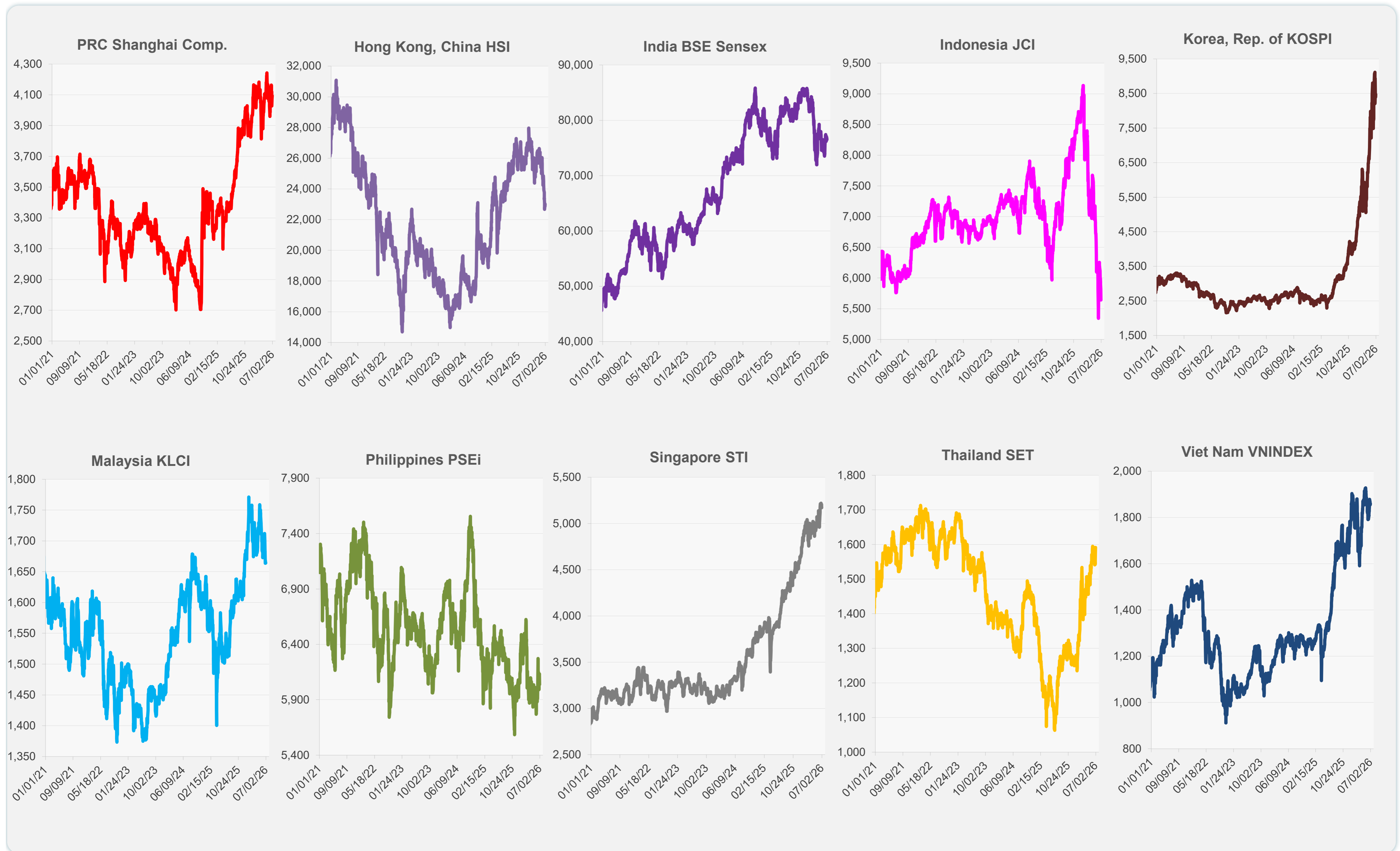
Source: Haver Analytics.

Daily Market Watch
STOCK INDEXES

	Latest Closing	% change from Previous Day	% change from 01-Jan-26
US Dow Jones Ind Avg	52,319.20	0.26	8.85
US NASDAQ	26,213.72	1.52	12.79
US S&P 500	7,499.36	0.79	9.55
UK FTSE 100	14,121.83	-0.43	25.40
EURO STOXX 50	6,328.09	1.55	9.27
Japan NIKKEI 225	70,062.32	0.86	39.18
Bangladesh DSEX	5,762.83	0.70	17.35
PRC Shanghai Comp.	4,094.40	0.50	3.16
Hong Kong, China HSI	22,881.02	-0.63	-10.73
India BSE Sensex	76,478.67	-0.33	-10.22
Indonesia JCI	5,643.19	-3.05	-34.74
Korea, Rep. of KOSPI	8,476.48	0.97	101.14
Malaysia KLCI	1,664.06	-0.11	-0.96
Pakistan KSE 100	180,080.10	0.88	2.04
Philippines PSEi	6,037.17	-1.57	-0.26
Singapore STI	5,170.65	-0.73	11.29
Sri Lanka CSEALL	22,263.28	-0.65	-1.60
Taipei, China TWSE	46,125.91	2.50	59.25
Thailand SET	1,591.24	0.85	26.32
Viet Nam VNINDEX	1,860.01	0.27	4.23



Sources: ADB calculations using data from Bloomberg and CEIC Data Company.



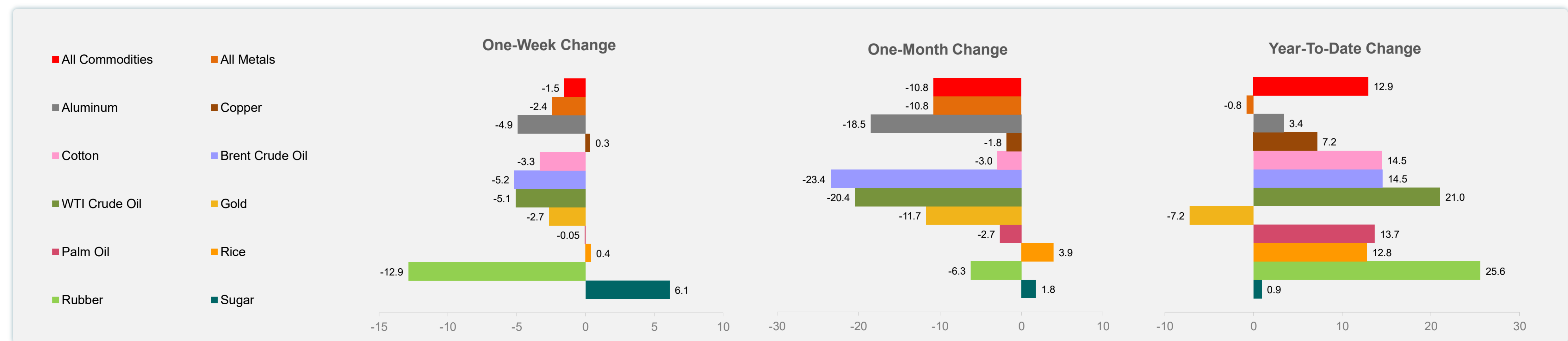
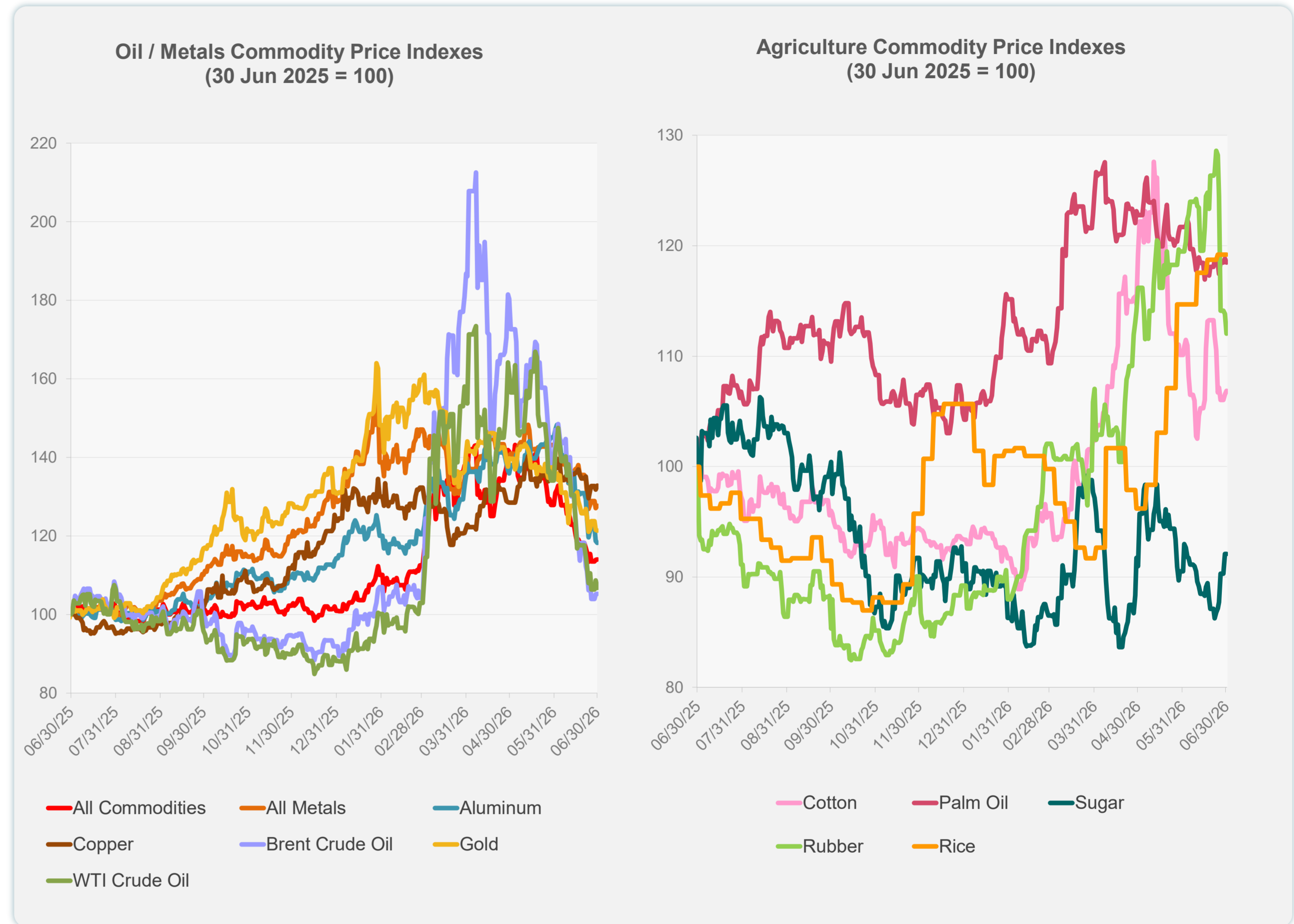
Sources: ADB calculations using data from Bloomberg and CEIC Data Company.

Daily Market Watch
COMMODITY PRICES

1 July 2026, 9:00 AM Manila

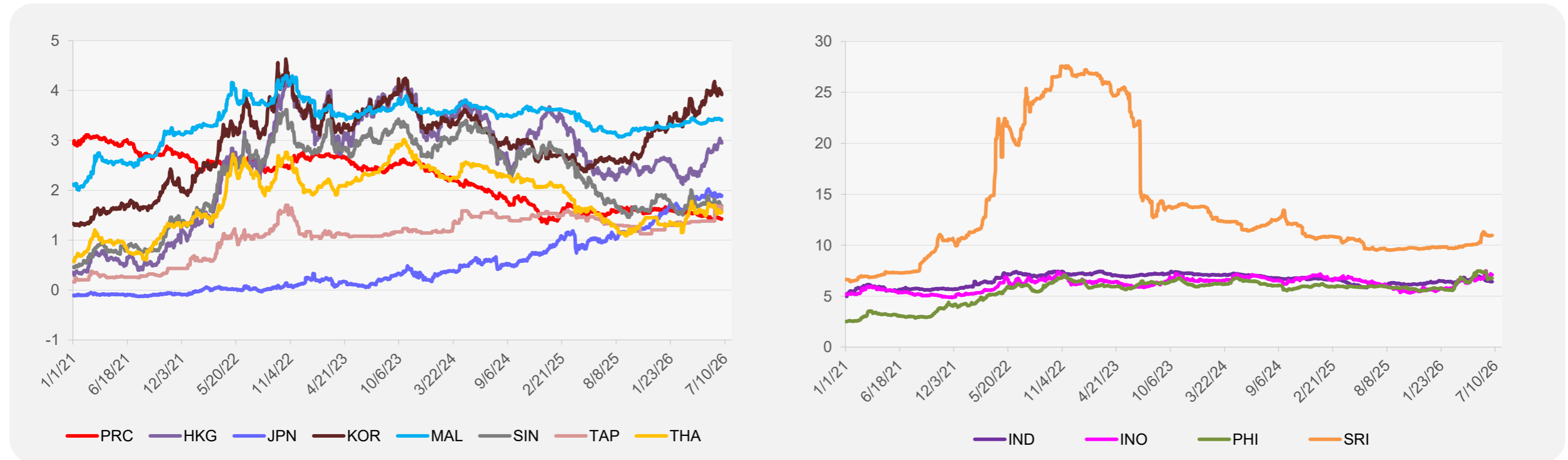
	Unit	Latest Closing	% change from Previous Day	% change from 01-Jan-26
S&P All Commodities	US\$	619.45	0.08	12.93
S&P All Metals	US\$	440.34	0.49	-0.77
Aluminum	US\$/metric ton	3,069.87	-0.46	3.43
Copper	US\$/metric ton	13,348.90	0.73	7.19
Cotton	US cents/lb	70.99	0.31	14.46
Brent Crude Oil	US\$/barrel	71.52	0.08	14.53
WTI Crude Oil	US\$/barrel	69.50	-1.77	21.04
Gold	US\$/troy oz	4,008.02	-0.20	-7.21
Palm Oil	US\$/metric tonne	1,101.00	-0.31	13.66
Rice ¹	US\$/metric ton	503.00	0.00	12.78
Rubber ²	US\$/kg	270.00	-1.57	25.58
Sugar	US cents/lb	14.93	0.00	0.95

¹ Latest closing price from 24 June 2026.
² Singapore Exchange, Ribbed Smoked Sheet Rubber.

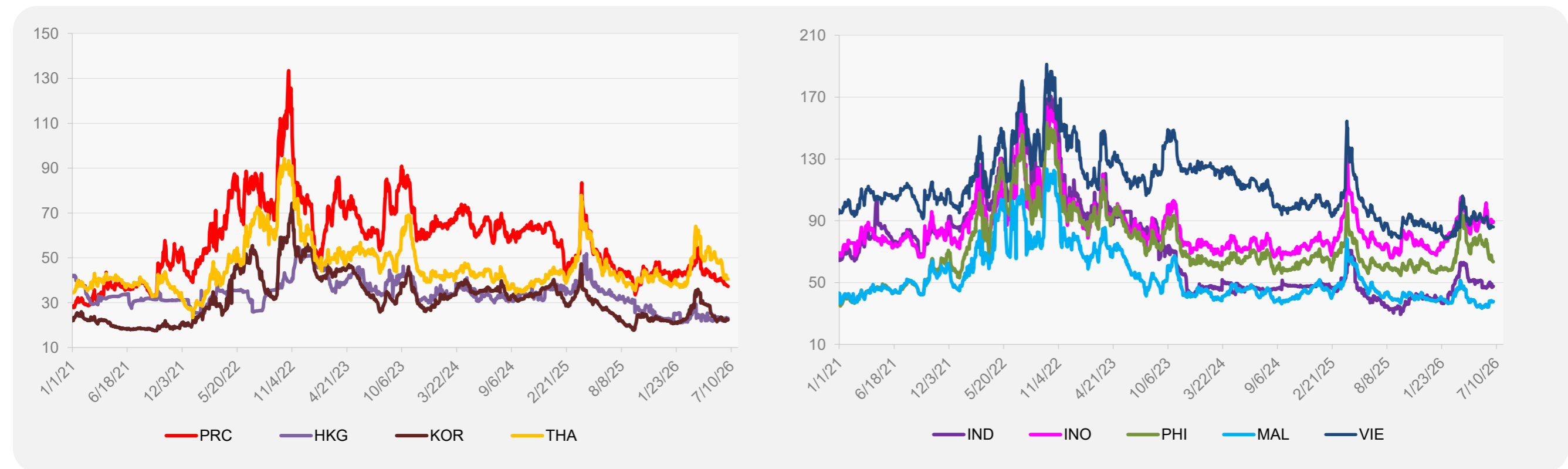


Source: ADB calculations using data from Bloomberg.

5-YEAR LOCAL CURRENCY GOVERNMENT BOND YIELDS (%)



5-YEAR CREDIT DEFAULT SWAP¹



¹ In USD and based on sovereign bonds.
Source: ADB calculations using data from Bloomberg.